



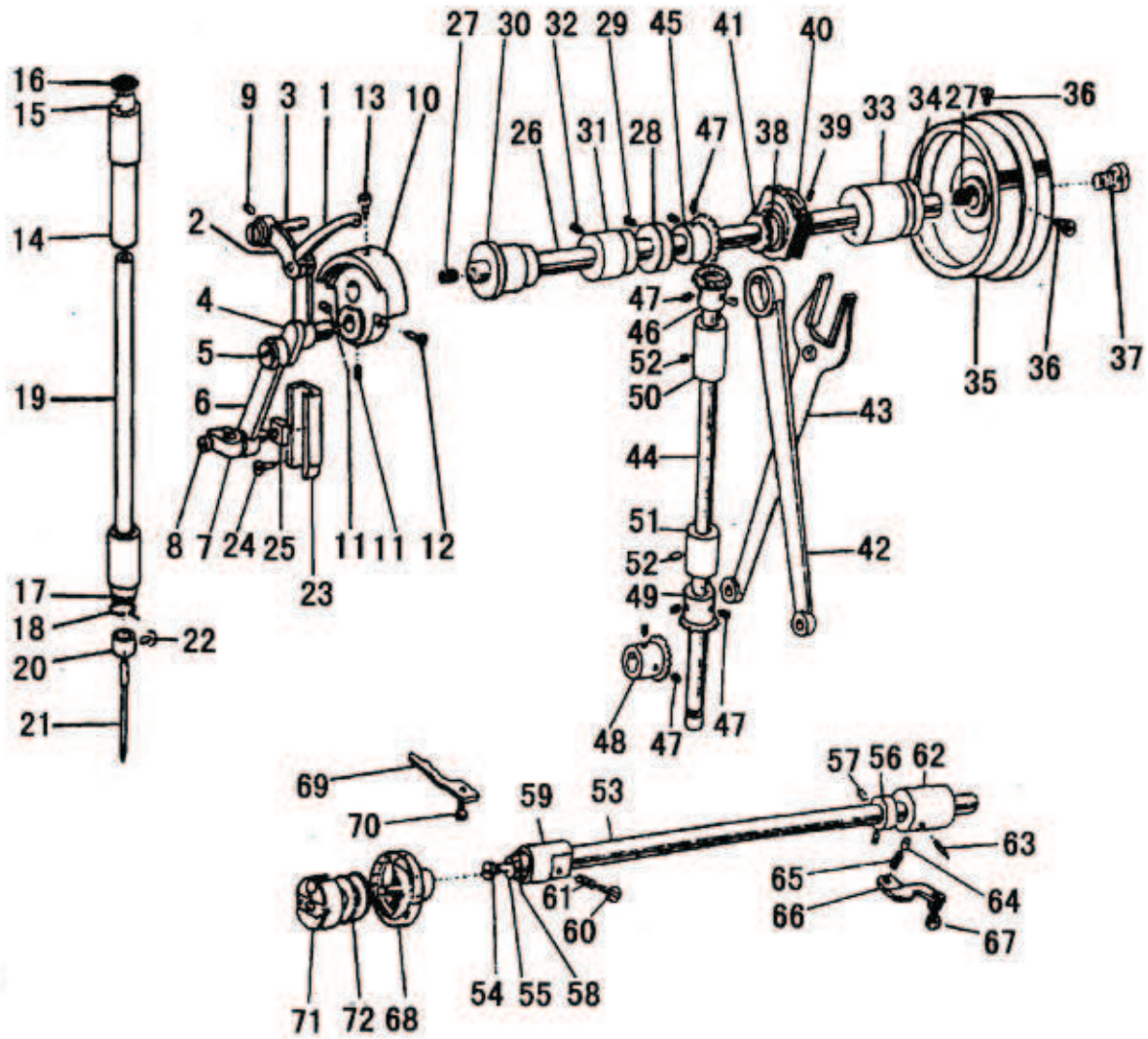
## A. ARM BED AND ITS ACCESSORIES

Fig. No.	Part No.	Description	GC0318-1A	GC0318-1H	GC0318-1B	Remarks
A01	HM307B8001	Arm	1		1	
A01	HN208B8001	Arm		1		
A02	HM309B8001	Trade mark plate	1			
A02	HN207B8001	Trade mark plate		1		
A02	HN105B8001	Trade mark plate			1	
A03	H924025050	rivet	6	6	6	GB/T827 $\phi 2.5 \times 5$
A04	H005008060	Spring washer	3	3	3	GB/T 93 6
A05	H2005B0065	Face plate	1	1	1	
A06	HA306B0674	Rubber plug ( $\phi 11.8$ )	3	3	3	
A07	HA607B0671	Thread guide on face plate	1	1	1	
A08	HA106B0676	Thread guide screw	1	1	1	SM9/64(40) $\times 6$
A09	HA700B2030	Face plate screw	2	2	2	SM11/64(40) $\times 20$
A10	HA300B2170	Screw group	4	4	4	
A11	H6028B8001	Arm side cover	1	1	1	
A12	H6029B8001	Gasket for arm side cover	1	1	1	
A13	H1210B0671	Check window	1	1	1	
A14	H6030B8001	Rubber plug ( $\phi 22$ )	1	1	1	
A15	HA112B0691	Screw type tension stud	1	1	1	SM11/64(40) $\times 16$
A16	HA112B0692	Spring for pre-tension	1	1	1	
A17	HA112B0693	Disc for pre-tension	2	2	2	
A18	HA112B0694	Spacer for pre-tension	1	1	1	
A19	H007013030	Stop ring	1	1	1	GB/T 896 3
A20	HA112B0695	Pre-tension thread guide	1	1	1	
A21	HA100B2100	Three-hple thread guide	1	1	1	
A22	HA100B2110	Set screw	1	1	1	SM11/64(40) $\times 5.5$
A23	HA115B0701	Thread tension stud	1	1	1	SM1/4(40) $\times 17$
A24	HA310B0701	Oil thumb nut	1	1	1	
A25	HA505B0671	Thread tension spring	1	1	1	
A26	HA310B0702	Thread tension releasing disc	1	1	1	
A27	HA310B0705	Thread tension disc	2	2	2	
A28	HA505B0672	Thread take-up spring	1	1		
A28	HN106B8001	Thread take-up spring			1	
A29	HA310B0703	Thread tension regulating bushing	1	1	1	
A30	HA115B0708	Set screw	1	1	1	SM9/64(40) $\times 4$
A31	HA115B0709	Thread tension releasing pin	1	1	1	
A32	HA115B7010	Stop disc	1	1	1	
A33	HA115B7011	Rubber ring	1	1	1	
A34	HA300B2080	Set screw	1	1	1	SM15/64(28) $\times 6.8$
A35	HA600B2050	Thread guide at arm center	1	1	1	
A36	HA300B2090	Rubber plug ( $\phi 8.8$ )	2	2	2	
A37	HA300B2100	Rubber plug ( $\phi 27$ )	1	1	1	
A38	HA300B2110	Red rubber plug ( $\phi 5.7$ )	2	2	2	
A38	HA300B2110	Red rubber plug ( $\phi 5.7$ )	2	2	2	

## A. ARM BED AND ITS ACCESSORIES

Fig. No.	Part No.	Description	GC0318-1A	GC0318-1H	GC0318-1B	Remarks
A39	H2100B2120	Needle plate	1			
A39	H2900B2030	Needle plate		1		
A39	H6520B8001	Needle plate			1	
A40	HA300B2190	Needle plate screw	2	2	2	SM11/64 (40) × 4.5
A41	HA124B0711	Slide plate	1	1	1	
A42	HA124B0712	Slide plate spring	1	1	1	
A43	HA124B0713	Screw	2	2	2	SM3/32 (56) × 2.2
A44	HA100B2220	Leg	3	3	3	
A45	HA300B2140	Plate for guide	1	1	1	
A46	HA300B2130	Screw	2	2	2	SM11/64 (40) × 5
A47	HA307B0673	Rubber plug	1	1	1	
A48	HA300B2160	Screw	5	5	5	
A49	H6409B8001	Arm bed cover	1	1	1	
A50	H6410B8001	Gasket for arm bed cover	1	1	1	

## B. NEEDLE BAR AND TAKE-UP, ARM SHAFT AND VERTICAL SHAFT MECHANISM



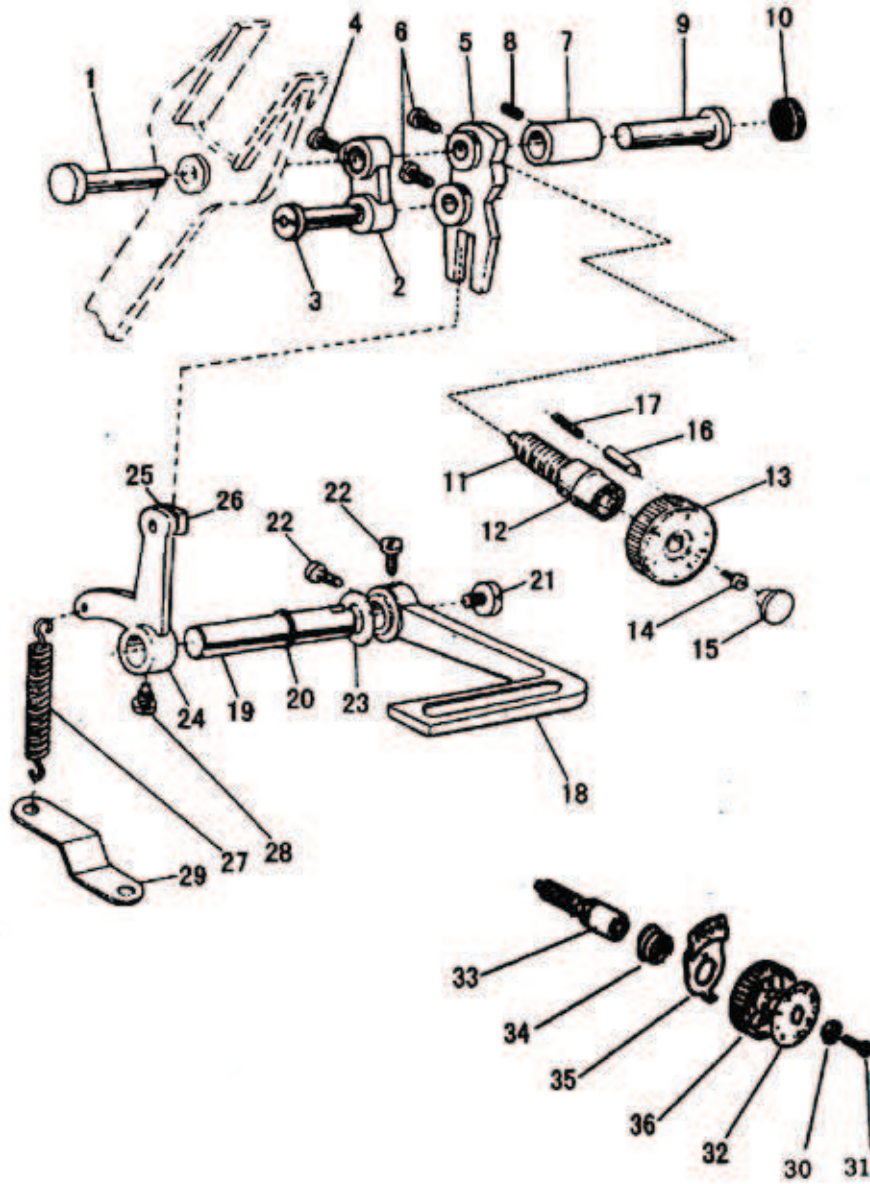
## B. NEEDLE BAR AND TAKE-UP, ARM SHAFT AND VERTICAL SHAFT MECHANISM

Fig. No.	Part No.	Description	GC0318-1A	GC0318-1H	GC0318-1B	Remarks
B01	H11111C104	Therad take-up lever	1		1	
B01	HA3111C104	Therad take-up lever		1		
B02	H11112C104	Thread take-up lever link	1		1	
B02	HA304C0012	Thread take-up lever link		1		
B03	HA104C0653	Hinge pin	1	1	1	
B04	HA504C0651	Thread take-up crank	1	1	1	
B04	HA104C0655	Needle bearing	2	2	2	
B05	HA104C0656	Set screw (left-handed)	1	1	1	SM9/64 (40) × 7
B06	HA304C0653	Needle bar link	1	1	1	
B07	HA104C0658	Needle bar adaptor	1	1	1	
B08	HA104C0659	Screw	1	1	1	SM9/64 (40) × 6
B09	HA100C2020	Set screw	1	1	1	SM15/64 (28) × 10
B10	HA307C0661	Needle bar crank	1	1	1	
B11	HA307C0662	Set screw	2	2	2	SM1/4 (40) × 6
B12	HA100C2060	Set screw	1	1	1	SM9/32 (28) × 13
B13	HA100C2070	Set screw	1	1	1	SM9/32/ (28) × 14
B14	HA100C2080	Needle bar bushing (upper)	1	1	1	
B15	HA100C2100	Felt plug	1	1	1	
B16	HA300C2050	Red rubber plug (Φ 8.8)	1	1	1	
B17	HA804B0652	Needle bar bushing (lower)	1	1	1	
B18	HA500C2060	Thread guide for needle bar bushing	1	1	1	
B19	H2100C2010	Needle bar	1		1	
B19	HA700G2030	Needle bar		1		
B20	HA500C2030	Thread guide for needle bar	1	1	1	
B21	H2000G2030	Needle	1			DP × 17 22#
B21	HA700G2040	Needle		1		DP × 5 14#
B21	H6524B8001	Needle			1	DP × 5 25#
B22	HA100C2170	Needle clamp screw	1	1	1	SM1/8 (44) × 4.5
B23	HA100C2180	Guide for slide block	1	1	1	
B24	HA100C2190	Set screw	2	2	2	SM11/64 (40) × 8
B25	HA100C2200	Slide block	1	1	1	
B26	HA304D0651	Arm shaft	1	1	1	
B27	HA104D0652	Rubber plug (Φ 7.4 × 10)	2	2	2	
B28	HA108G0661	Collar for	1	1	1	
B29	HA105D0662	Set screw	2	2	2	SM1/4 (40) × 4
B30	HA100D2030	Arm shaft bushing (left)	1	1	1	
B31	HA100D2040	Arm shaft bushing (middle)	1	1	1	
B32	HA100C2020	Set screw	1	1	1	SM15/64 (28) × 10
B33	HA300D2020	Arm shaft bushing (right)	1	1	1	
B34	HA306D0066	Oil seal	1	1	1	
B35	H2000C2040	Balance wheel	1	1	1	
B36	HA110D0672	Set screw	2	2	2	SM15/64 (28) × 12
B37	HA100D2080	Screw	1	1	1	SM11/32 (28) × 10

## B. NEEDLE BAR AND TAKE-UP, ARM SHAFT AND VERTICAL SHAFT MECHANISM

Fig. No.	Part No.	Description	GC0318-1A	GC0318-1H	GC0318-1B	Remarks
B38	H38111D104	Feed and feed lifting eccentric	1	1	1	
B38	HA3411D108	Feed and feed lifting eccentric		1		
B39	HA3411D308	Set screw	2	2	2	
B40	H38111D204	Eccentric sleeve	1		1	
B40	HA3411D208	Eccentric sleeve		1		
B41	HA112D3012	Retaining ring	1	1	1	
B42	HA112D3013	Crank rod for feed lifting rock shaft	1	1	1	
B43	H3800D2020	Feed forked connection	1		1	
B43	HA504D0651	Feed forked connection		1		
B44	H2100D2010	Vertical shaft	1	1	1	
B45	HA113D2112	Bevel gear for arm shaft	1	1	1	
B46	HA113D2122	Bevel gear for vertical shaft(upper)	1	1	1	
B47	HA108C0663	Set screw	8	8	8	SM1/4(40) × 7
B48	HA113D2212	Bevel gear for hook shaft	1	1	1	
B49	HA113D2222	Bevel gear for vertical shaft(lower)	1	1	1	
B50	HA100D2110	Vertical shaft bushing(upper)	1	1	1	
B51	HA600D2010	Vertical shaft bushing(lower)	1	1	1	
B52	HA100C2020	Set screw	2	2	2	SM15/64(28) × 10
B53	HA904E0651	Rotating hook shaft	1	1	1	
B54	HA1111E104	Filter screw	1	1	1	SM3/16(32) × 9
B55	HA1111E204	Filter	1	1	1	
B56	HA305E0661	Collar for hook shaft	1	1	1	
B57	HA305E0662	Set screw	2	2	2	SM15/64(28) × 4.5
B58	HA106E0071	Oil seal for rotating hook shaft	1	1	1	
B59	HA100E2040	Hook shaft bushing (left)	1	1	1	
B60	HA100E2050	Oil adjusting screw	1	1	1	SM11/64(40) × 28.5
B61	HA100E2060	Spring for oil adjuster	1	1	1	
B62	HA311E0671	Hook shaft bushing (right)	1	1	1	
B63	HA110E0672	Oil pipe for hook shaft bushing	1	1	1	
B64	HA300E2100	Plunger	1	1	1	
B65	HA300E2110	Plunger spring	1	1	1	
B66	HA600E2020	Guide plate	1	1	1	
B67	HA104F0654	Screw	1	1	1	SM15/64(28) × 10
B68	H1105E0066	Rotating hook complete	1			
B68	HA500E2030	Rotating hook complete		1		
B68	H6519B8001	Rotating hook complete			1	
B69	H2100E2010	Rotating hook positioner	1		1	
B69	HA300E2050	Rotating hook positioner		1		
B70	HA100E2150	Screw	1		1	SM11/64(40) × 13
B70	HA100E2150	Screw		1		SM11/64(40) × 13
B71	HAG08E0067	Bobbin case	1		1	
B71	HA300E2070	Bobbin case		1		
B72	H1100E2010	Bobbin	1		1	
B72	HA100E2180	Bobbin		1		

# C.STITCH REGULATOR MECHANISM

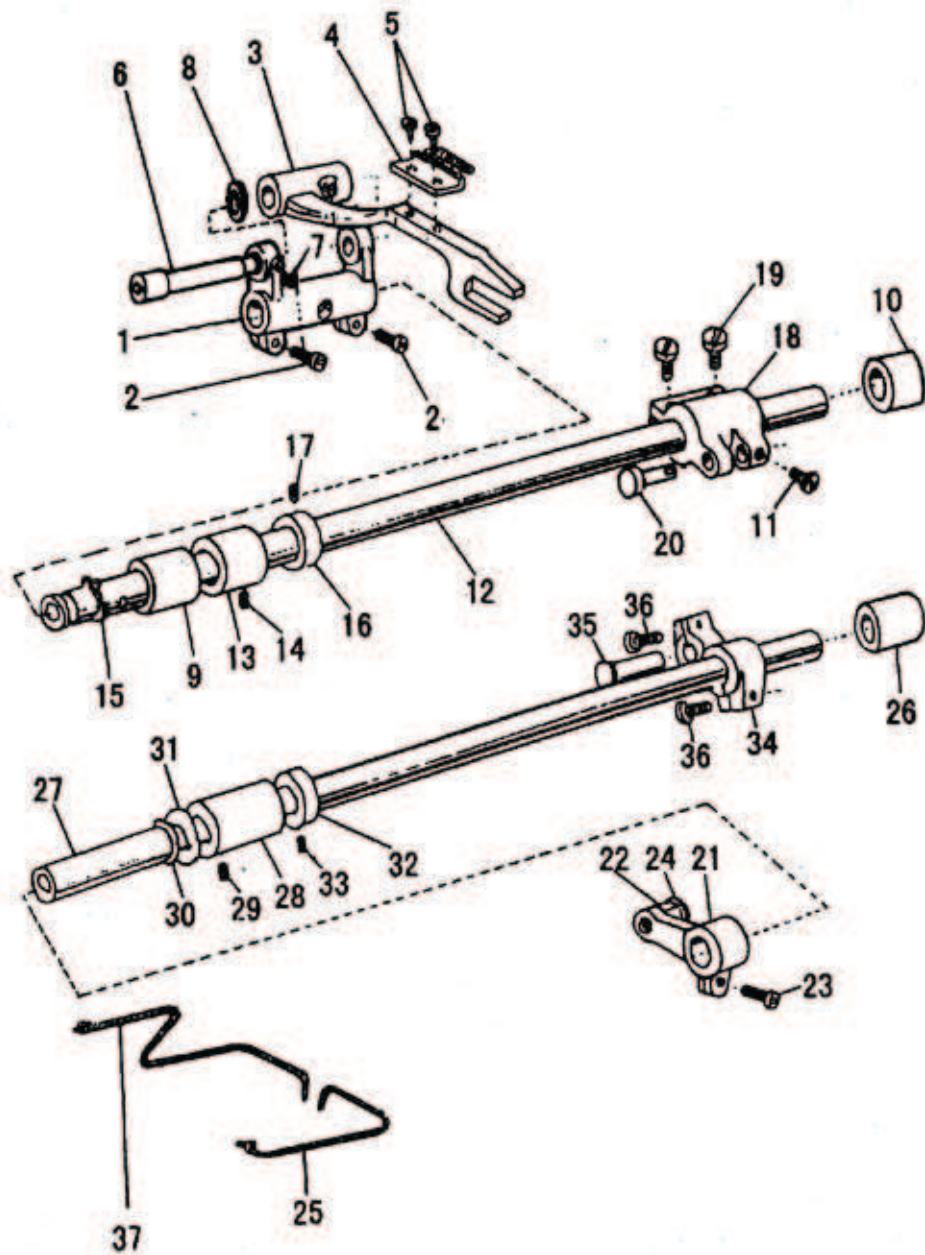


## C.STITCH REGULATOR MECHANISM

Fig. No.	Part No.	Description	GC0318-1A	GC0318-1H	GC0318-1B	Remarks
C01	HA104F0651	Hinge pin	1	1	1	
C02	HA104F0652	Feed connecting link	1	1	1	
C03	HA104F0653	Hinge pin for feed connecting link	1	1	1	
C04	HA104F0654	Screw	1	1	1	SM15/64 (28) × 10
C05	HI000F2010	Feed regulator	1		1	
C05	HA105F0661	Feed regulator		1		
C06	HA104F0654	Screw	2	2	2	SM15/64 (28) × 10
C07	HA300F2020	Feed regulator bushing	1	1	1	
C08	HA100C2020	Set screw	1	1	1	SM15/64 (28) × 10
C09	HA100F2040	Hinge pin for feed regulator	1	1	1	
C10	HA700B2120	Rubber plug (Φ20×6)	1	1	1	
C11	HA109F0671	Feed regulator screw bar		1		
C12	HA109F0674	O-ring	2	2	2	Φ14×2.4
C13	HA307F0661	Dial		1		
C13	H3100E2070	Dial	1		1	
C14	HA109F0673	Screw		1		SM3/16 (28) × 8
C15	HA300F2050	Rubber plug		1		
C16	HA100F2080	Stopper pin	1	1	1	
C17	HA100F2090	Spring for stopper pin	1	1	1	
C18	HA309F0671	Reverse feed lever	1	1	1	
C19	HA113F3021	Reverse feed lever shaft	1	1	1	
C20	HA113F3022	O-ring	1	1	1	Φ9×1.9
C21	HA113F0683	Screw	1	1	1	SM3/16 (28) × 6.5
C22	HA104F0654	Screw	2	2	2	
C23	HA100F2110	Washer	1	1	1	
C24	H2605E0661	Reverse feed crank	1		1	
C24	HA115F0691	Reverse feed crank		1		
C25	HA1511F115	Slide block pin	1	1	1	
C26	HM306F8001	slide block	1		1	
C26	HA1511F215	slide block		1		
C27	HA115F0692	Spring for feed crank	1	1	1	
C28	HA100F2130	Screw	1	1	1	SM15/64 (28) × 10
C29	HA100F2140	Bracket spring	1	1	1	
C30	HA720F0685	Bushing	1		1	
C31	HA720F0686	Screw	1		1	
C32	HM308F8001	Plate for stitch length	1		1	
C33	HA720F0681	Screw bar	1		1	
C34	HA720F0687	Coil spring	1		1	
C35	HA720F0683	Stopper pin releasing lever	1		1	
C36	HA7421F120	Dial	1		1	



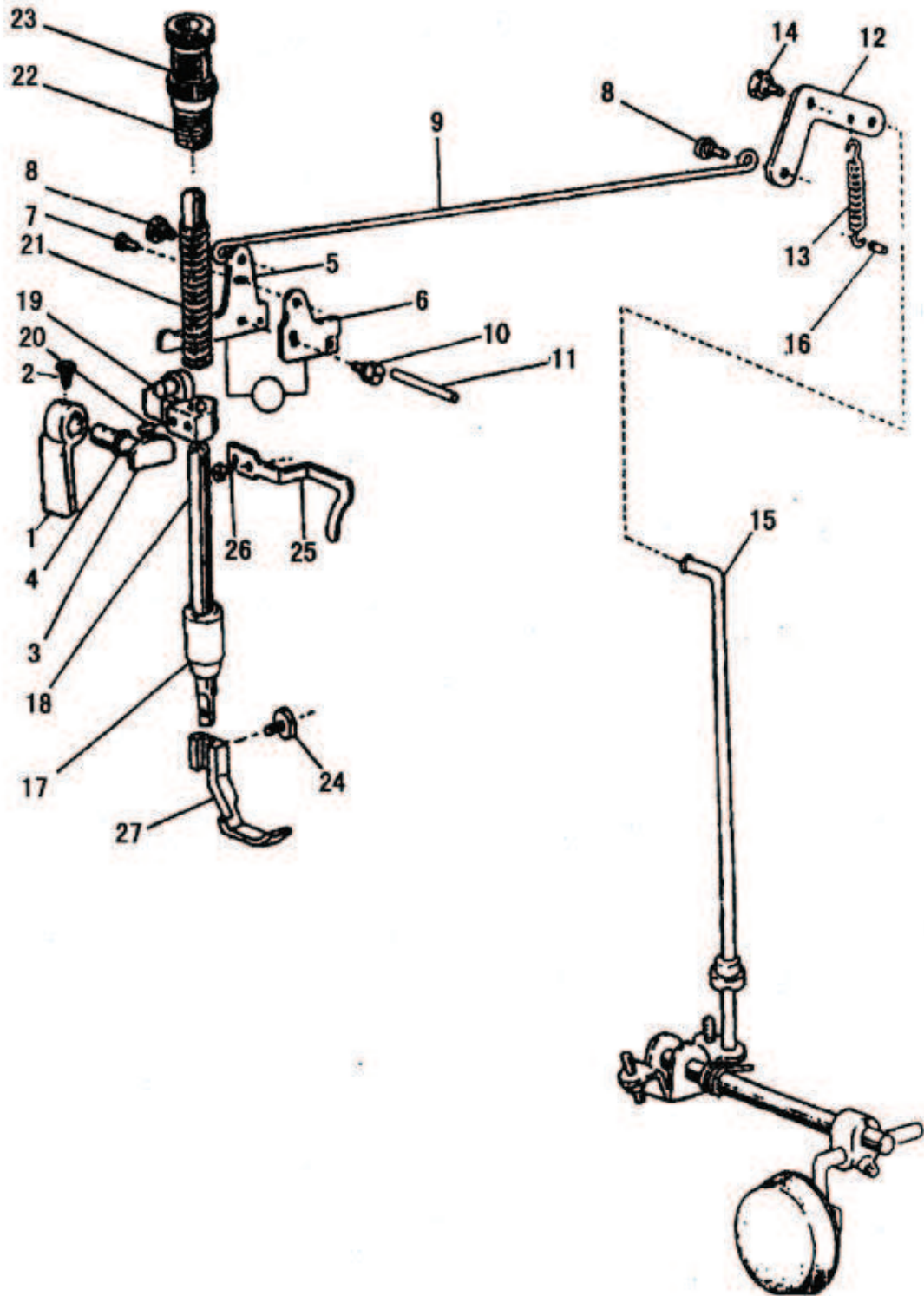
# D.FEEDING AND FEED LIFTING MECHANISM



## D.FEEDING AND FEED LIFTING MECHANISM

Fig. No.	Part No.	Description	GC0318-1A	GC0318-1H	GC0318-1B	Remarks
D01	HA104G0011	Feed rock shaft crank (left)	1	1	1	
D02	HA304G0656	Screw	2	2	2	SM3/16(28) × 15
D03	H2004L0661	Feed bar	1	1	1	
D04	HA104G0653	Feed dog	1		1	
D04	H2900G2010	Feed dog		1		
D04	H6521B8001	Feed dog			1	
D05	HA104G0654	Screw	2	2	2	SM1/8(44) × 6
D06	H1100G2040	Hinge pin for feed regulator	1	1	1	
D07	HA100C2190	Screw	1	1	1	SM11/64(40) × 8
D08	HA104G0656	Washer	1	1	1	
D09	H2100G2060	Bushing for feed rock shaft(left)	1		1	
D10	H2100G2050	Bushing for feed rock shaft(right)	1		1	
D11	HA104F0654	Screw	1	1	1	SM15/64(28) × 10
D12	H2100G2010	Feed rock shaft	1	1	1	
D13	H2100G2020	Bushing for feed rock shaft	1	1	1	
D14	HA305E0662	Set screw	1	1	1	SM15/64(28) × 4
D15	H007009150	C-type stop ring	1	1	1	
D16	HA108G0661	Collar	1	1	1	
D17	HA105D0662	Set screw	2	2	2	SM1/4(40) × 4
D18	H2100G2030	Feed rock shaft crank (right)	1	1	1	
D19	HA104G0012	Screw	2	2	2	SM3/16(28) × 12
D20	H2100G2040	Hinge pin	1	1	1	
D21	HA305G1011	Feed lifting rock shaft crank (left)	1	1	1	
D22	HA305G1012	Shaft	1	1	1	SM11/64(40) × 12
D23	HA111G0683	Screw	1	1	1	
D24	HA310G3011	Eccentric sleeve	1	1	1	
D25	HA305G0664	Oil braid	1	1	1	
D26	H2100G2070	Bushing for feed lifting rock shaft(right)	1		1	
D27	HA200G2020	Feed lifting rock shaft	1		1	
D27	HA305G0663	Feed lifting rock shaft		1		
D28	HA100G2120	Bushing for feed lifting rock shaft	1	1	1	
D29	HA100C2020	Set screw	1	1	1	SM15/64(28) × 10
D30	H007009150	C-type stop ring	1	1	1	
D31	HA100G2130	Washer	2	2	2	SM1/4(40) × 4
D32	HA108G0661	Collar for feed lifting rock shaft	1	1	1	
D33	HA105D0662	Screw	1	1	1	
D34	HA306G0671	Feed lifting rock shaft crank (right)	1	1	1	
D35	HA100G2070	Hinge pin	2	2	2	SM3/16(28) × 12
D36	HA104G0012	Screw	1	1	1	
D37	HA304G0655	Oil braid	1	1	1	

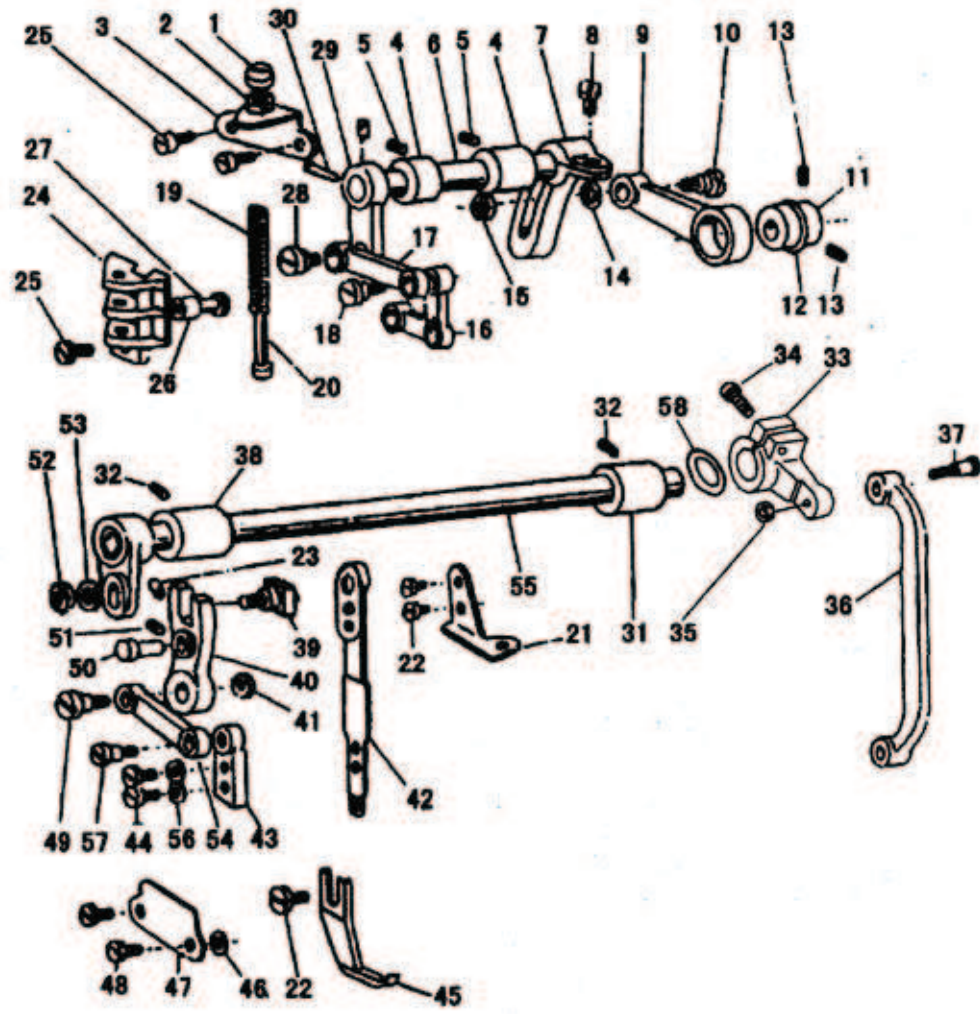
## E. PRESSER FOOT MECHANISM



## E. PRESSER FOOT MECHANISM

Fig. No.	Part No.	Description	GC0318-1A	GC0318-1H	GC0318-1B	Remarks
E01	H2104H0651	Presser bar lifter	1	1	1	
E02	HA100B2110	Set screw	1	1	1	SM11/64(40) × 5
E03	H2104H0661	Presser bar lifting cam	1	1	1	
E04	HA300H2080	Oil seal fot presser bar litting cam	1	1	1	8 × 1.9
E05	HA107H1011	Knee lifter lever (left)	1	1	1	
E06	HA305H6611	Tension releasing cam	1	1	1	
E07	HA107H1013	Screw	1	1	1	SM11/64(40) × 6
E08	HA107H0662	Hinged screw	2	2	2	SM3/16(28) × 3.5
E09	HA107H0663	Knee lifter rod	1	1	1	
E10	HA100H2050	Bolt	1	1	1	SM15/64(28) × 13
E11	HA100H2060	Tension releasing pin	1	1	1	
E12	HA110H0671	Knee lifter lever (right)	1	1	1	
E13	H3211E0692	Spring	1	1	1	
E14	HA100H2050	Bolt for knee lifter lever	1	1	1	SM15/64(28) × 10
E15	HA306H0671	Knee lifter connecting rod	1	1	1	
E16	HA720B0651	Pin for spring	1	1	1	
E17	HA300H2090	Presser bar bushing	1	1	1	
E18	H2000I2010	Presser bar	1	1	1	
E19	HM305H8001	Presser bar lifting bracket	1	1	1	
E20	HA3411D308	Set screw	1	1	1	SM15/64(28) × 7
E21	H1100H2020	Presser spring	1	1	1	
E22	H2005I0065	Pressure regulating thumb screw	1	1	1	SM1/2(28) × 43
E23	HA117H0692	Lock nut	1	1	1	
E24	HA100H2150	Set screw	1	1	1	SM9/64(40) × 11
E25	HA300H2120	Upper thread guide	1	1	1	
E26	HA100C2040	Screw	1	1	1	SM11/64(40) × 5
E27	H3800H2020	Presser loot complete	1			
E27	H2900H2020	Presser loot complete		1		
E27	H6522B8001	Presser loot complete			1	

# F. PRESSER LIFTING, FEEDING MECHANISM



## F. PRESSER LIFTING、 FEEDING MECHANISM

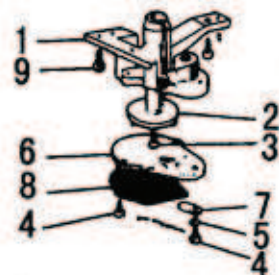
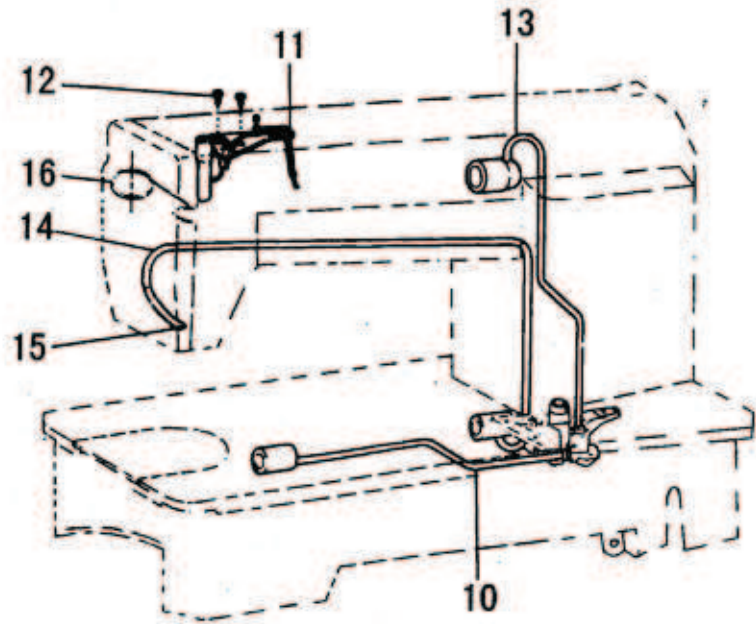
Fig. No.	Part No.	Description	GC0318-1A	GC0318-1H	GC0318-1B	Remarks
F01	H2010J0065	Lifting presser adjusting screw	1	1	1	SM9/32(28)×35
F02	H2010J0066	Lifting presser adjusting nut	1	1	1	SM9/32(28)
F03	H2000J2060	Lifting presser bracket for spring	1	1	1	
F04	H2009B0068	Presser lifting shaft bushing	2	2	2	
F05	HA100B2110	Screw	2	2	2	
F06	H2011J0066	Shaft	2	2	2	
F07	H2100I2010	Presser lifting shaft	1	1	1	
F08	H2012N0652	Set screw	1	1	1	
F09	H2104I0065	Eccentric wheel rod	1	1	1	
F10	H2000J2100	Set screw	1	1	1	M6(0.75)×29
F11	H2014J0652	Eccentric wheel	1	1	1	
F12	H007009250	C-type stop ring	1	1	1	GB/T894.1 25
F13	HA307C0662	Screw	2	2	2	SM1/4(40)×6
F14	H2013J0065	Washer	1	1	1	
F15	H0030020608	Nut	1	1	1	GB/T6170 M6×0.75
F16	H2100I2020	Presser feed crank	1	1	1	
F17	H2004J0652	Presser feed crank link	1	1	1	
F18	H2004J0653	Screw	1	1	1	SM3/16(28)×12.6
F19	H2100I2190	Lifting presser spring	1	1	1	
F20	H2007J0066	Presser spring guide	1	1	1	
F21	H2004J0658	Lifting presser guide plate	1	1	1	
F22	HA100H2150	Screw	1	1	1	SM9/64(40)×13
F23	H609025180	Pin	1	1	1	GB/T879.1 2.5×18
F24	H2000J2020	Lifting presser plate	2	2	2	
F25	H2000I2050	Screw	1	1	1	SM9/64(40)×10
F26	H2000J2030	Lifting presser spring guide pin	1	1	1	
F27	H2004J0655	Feed crank guide shaft	1	1	1	
F28	H2004J0662	Screw	1	1	1	SM1/4(40)×15
F29	H2011J0065	Presser lifting crank	1	1	1	
F30	H602040200	Pin	1	1	1	GB/T117 4×20
F31	H3209B0065	Presser swing shaft bushing (right)	1	1	1	
F32	HA100B2110	Screw	2	2	2	SM11/64(40)×5.5
F33	H6013F8001	Presser swing crank(right)	1	1	1	
F34	H6017F8001	Screw	1	1	1	SM1/4(24×19.7)
F35	H2010J0066	Lifting presser adjusting nut	1	1	1	SM9/32(28)
F36	H2100I2030	Presser swing crank (right) rod	1	1	1	
F37	H2012N0066	Screw	1	1	1	SM9/32(28)×28
F38	H2100I2060	Presser swing shaft bushing (left)	1	1	1	
F39	H2121I0065	Lifting presser sway crank shaft compl	1	1	1	
F40	H2013N0069	Lifting presser sway crank	1	1	1	
F41	H2008N0066	Lock nut	1	1	1	SM1/4(40)
F42	H2004J0654	Presser rod	1	1	1	
F43	H2004J0661	Presser rod guide	1	1	1	

## F. PRESSER LIFTING、 FEEDING MECHANISM

Fig. No.	Part No.	Description	GC0318-1A	GC0318-1H	GC0318-1B	Remarks
F44	H2004J0067	Screw	2	2	2	SM9/64(40)×9
F45	H2100I2040	Out presser	1		1	
F45	H2900I2020	Out presser		1		
F45	H6525B8001	Out presser			1	
F46	H2000N0040	Space for presser rod plate	2	2	2	
F47	H2000N0030	Lifting presser rod plate	1	1	1	
F48	HA111G0683	Screw	2	2	2	SM11/64(40)×14.5
F49	H2008N0065	Screw	1	1	1	SM1/4(40)×26
F50	H2013N0066	Lifting presser sway crank guide pin	1	1	1	SM1/4(40)
F51	H2100I2070	Screw	1	1	1	SM3/16(32)×7
F52	H2013N0067	Presser crank connecting nut	1	1	1	SM1/4(24)
F53	H2013J0065	Washer	1	1	1	
F54	H2013N0070	Presser swing crank(left)	1	1	1	
F55	H6507I8001	Presser swing shaft	1	1	1	
F56	HA100I2050	Washer	1	1	1	
F57	H2004J0662	Screw	1	1	1	SM1/4(40)×15
F58	H6018F8001	O-ring	1	1	1	

# G. OIL LUBRICATION MECHANISM

---



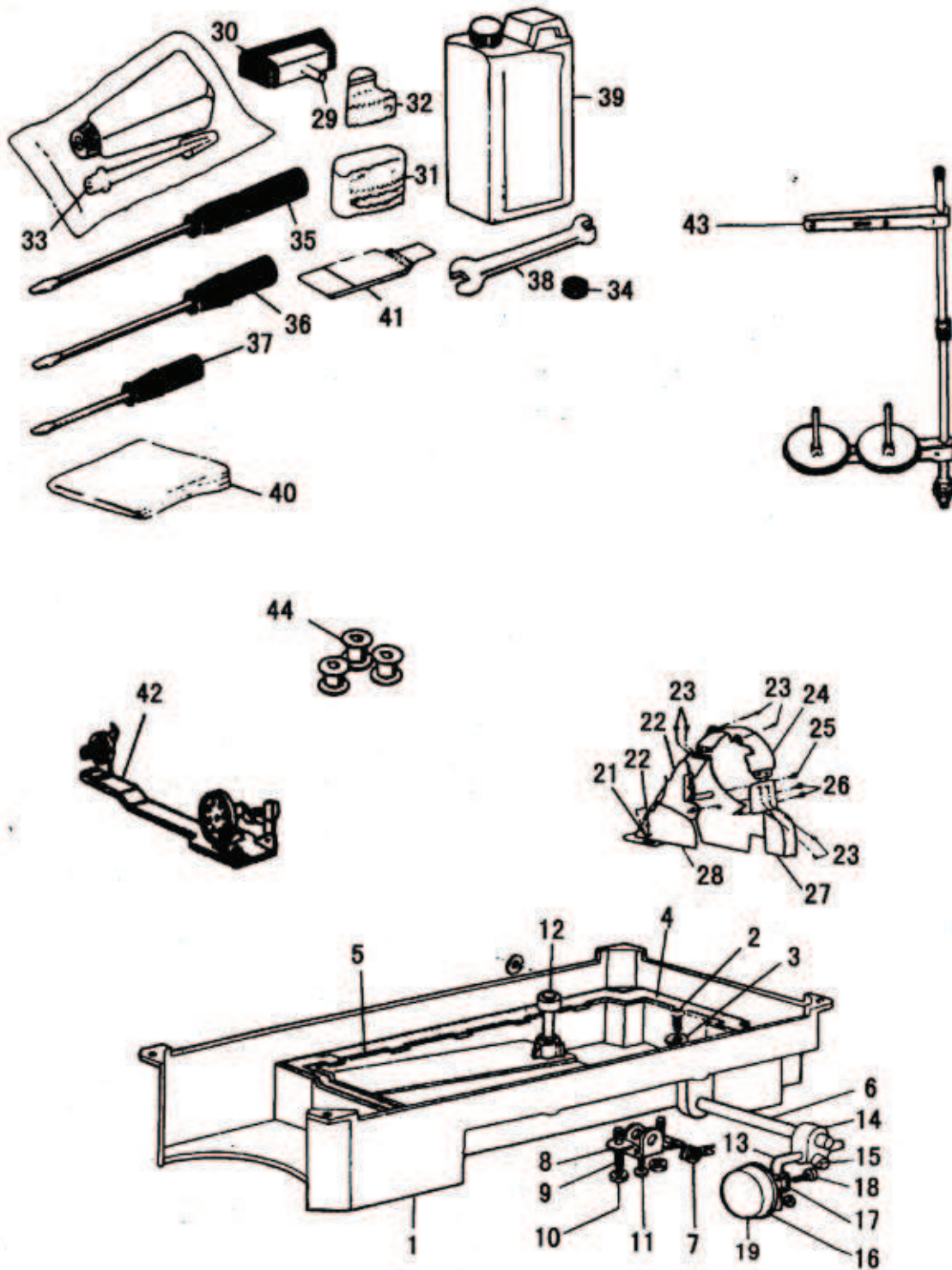


## G.OIL LUBRICATION MECHANISM

Fig. No.	Part No.	Description	GC0318-1A	GC0318-1H	GC0318-1B	Remarks
G01	HA100I2010	Oil pump body	1	1	1	
G02	H6010I8001	Oil pump impeller	1	1	1	
G03	HA100I2090	Screw	1	1	1	
G04	HA300I2050	Screw	3	3	3	
G05	HA100I2050	Spring washer	1	1	1	
G06	H6012I8001	Oil pump fitting plate	1	1	1	
G07	HA100I2070	Oil adjusting plate	1	1	1	
G08	HA111I0065	Oil pump screen complete	1	1	1	
G09	HA100I2090	Screw	3	3	3	
G10	HA113I0066	Oil pipe for hook shaft	1	1	1	
G11	HA304I0065	Oil braid fitting plate	1	1	1	
G12	HA100I2020	Screw	2	2	2	
G14	HA305I0661	Oil return pipe	1	1	1	
G15	HA100I2150	Felt pouch	1	1	1	
G16	HA300I2060	pipe holder	1	1	1	

## H. OIL RESERVOIR AND OTHER ACCESSORIES

---



## H. OIL RESERVOIR AND OTHER ACCESSORIES

Fig. No.	Part No.	Description	GC0318-1A	GC0318-1H	GC0318-1B	Remarks
H01	HA304J0651	Oil seservoir	1	1	1	
H02	HA104J0652	Oil drain screw	1	1	1	
H03	HA104J0653	Washer	1	1	1	
H04	HA104J0654	Gasket for oil reservoir (small)	1	1	1	
H05	HA104J0655	Gasket for oil reservoir (big)	1	1	1	
H06	HA300J2160	Hinge pin for knee lifter	1	1	1	
H07	HA104J0657	Backspring for knee lifter	1	1	1	
H08	HA104J0658	Knee lifter stop bracket	1	1	1	
H09	HA104J0659	Adjusting screw	2	2	2	SM15/64(28) × 28
H10	HA104J6510	Lock nut	2	2	2	
H11	HA110D0672	Screw	1	1	1	SM15/64(28) × 14.8
H12	HA106J0661	Knee lifter lifting rod	1	1	1	
H13	HA106J0662	Knee lifter bell crank	1	1	1	
H14	HA106J0663	Joint for knee lifter bell crank	2	2	2	
H15	HA300J2180	Set screw	1	1	1	SM5/16(28) × 16
H16	HA106J0665	Knee lifter plate	1	1	1	
H17	HA106J0666	Bracket for knee lifter plate	1	1	1	
H18	HA106J0667	Set screw	1	1	1	SM15/64(28) × 8
H19	HA106J0668	Pad for knee lifter plate	4	4	4	
H20	H801045200	Screw	4	4	4	GB/T99 4.5 × 20
H21	HA300J2230	Washer	1	1	1	
H22	H200800068	Belt(upper)	6	6	6	
H23	HA300B2170	Screw	1	1	1	SM11/64(40) × 8
H24	H200800671	Belt mark complrte	1	1	1	
H25	HA300J2250	Screw	2	2	2	M4 × 12.5
H26	HA300J2280	Screw	1	1	1	SM15/64(28) × 8
H27	H200800067	Belt (lower)	1	1	1	
H28	HA305J0665	Belt complete	1	1	1	
H29	HA110J0701	Hinge of machine head	2	2	2	
H30	HA307J0671	Rubber socket for hinge	2	2	2	
H31	HA300J2050	Rubber cushion(big)	2	2	2	
H32	HA300J2060	Rubber cushion(small)	2	2	2	
H33	HA100J2110	Oiler	1	1	1	
H34	HA100J2120	Magnet	1	1	1	
H35	HA300J2070	Screw driver(long)	1	1	1	
H36	HA300J2200	Screw driver(medium)	1	1	1	
H37	HA300J2210	Screw driver(short)	1	1	1	
H38	HA300J2220	Double-end wrench	1	1	1	
H39	HA100J2170	Oil container	1	1	1	
H40	HA100J2180	Vinyl cover	1	1	1	
H41	H2000G2030	Needle	4			
H41	HA700G2040	Needle		4		
H41	HN504C8001	Needle			4	

## H. OIL RESERVOIR AND OTHER ACCESSORIES

Fig. No.	Part No.	Description	GC0318-1A	GC0318-1H	GC0318-1B	Remarks
H42	HA905S0066	Bobbin winder assy	1		1	
H42	HA905S0067	Bobbin winder assy		1		
H43	HA200J2030	Washer	1	1	1	
H44	HI100E2010	Bobbin	3		3	
H44	HA100E2170	Bobbin		3		