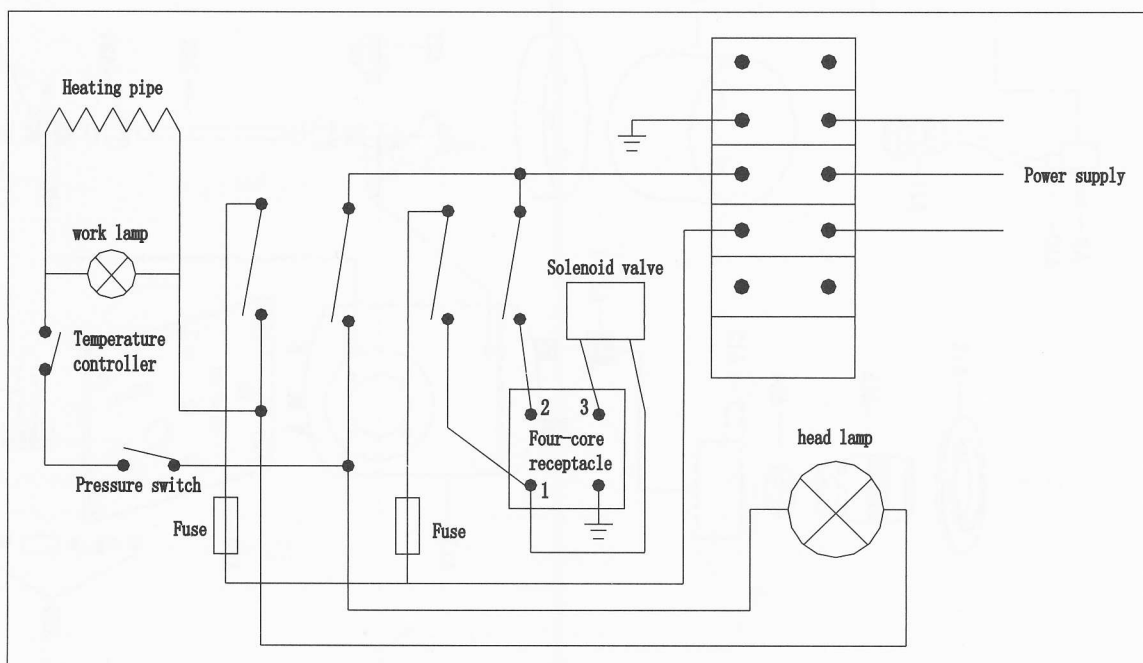




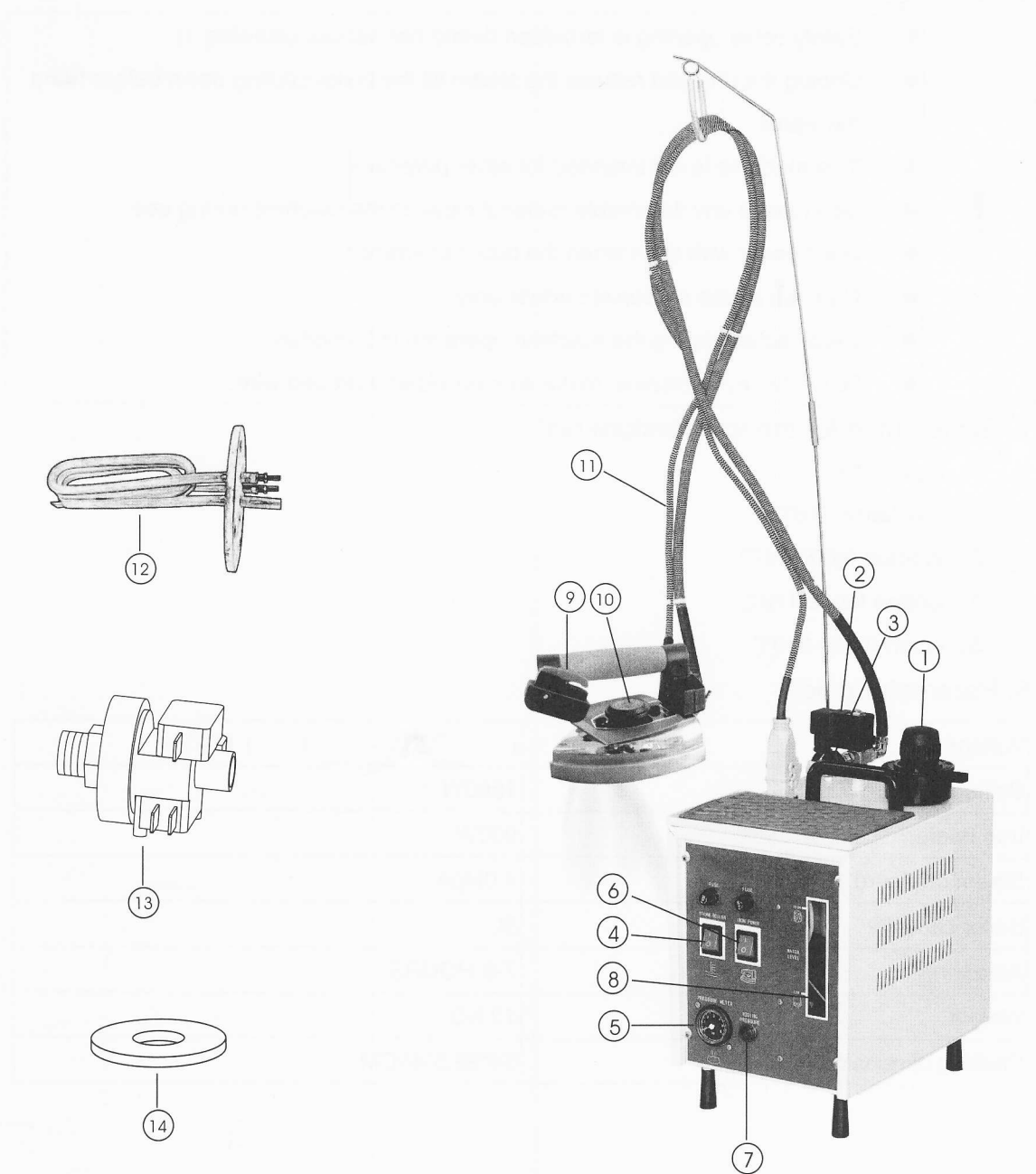
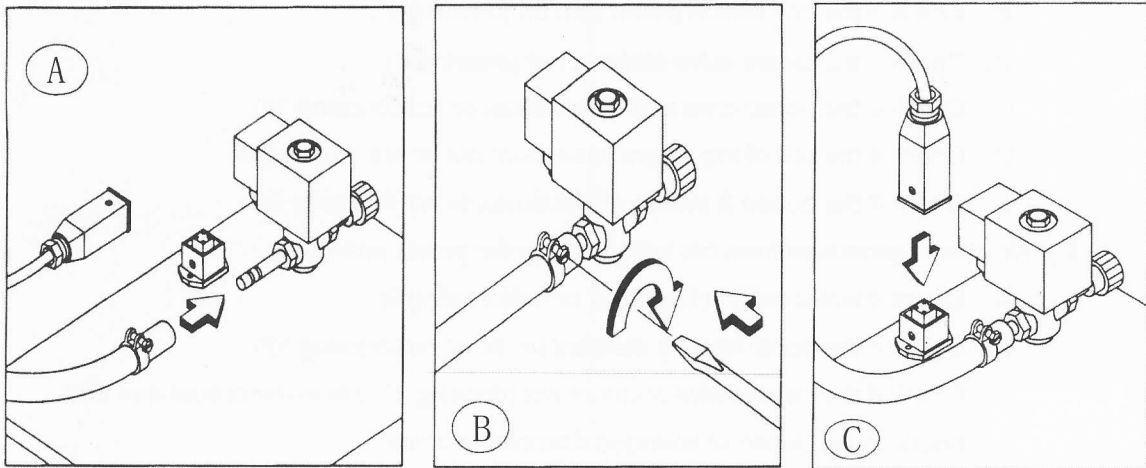
## BOILER PARTS NAME

PART NO.	NAME	PART NO.	NAME
A1	Host outer shell	A23	Cupreous conjunction
A2	Lifting handle module	A24	Cupreous nut complete set
A3	Heat insulation cushion	A25	Glass tube
A4	Brace	A26	Glass tube connector
A5	Electric outlet module	A27	Pressure controller
A6	Bracket	A28	Manometer module
A7	Steam tube connector	A29	Sealing ring
A8	Steam valve module	A30	Heating element
A8-3	Coil	A31	Hexangular screw
A9	Screw	A32	Thermostat
A10	Electromagnetic valve plug	A33	Six pin the line connector
A11	Power cord clip	A34	Lamp
A12	Boiler	A35	Lamp holder
A12-1	Safety valve connector	A36	Panel
A13	Safety valve base	A37	Indicator lamp
A14	Hexangular nut	A38	Switch
A15	Safety valve	A39	Fuse complete set
A16	Safety valve upper cover	A40	Rear cover
A17	Keep-warm cotton cover	A41	Power cord clip
A18	Heat-shield cotton ring	A42	Power cord
A19	Bottom board	A43	Measuring cup
A20	Supporting feet module	A44	Funnel
A21	Turn on water the valve	A45	Spring
A22	Cupreous cover complete set	A46	Cable bracket

## Wiring Diagram of the Machine



9、Diagram a sketch map



# Instruction for Use

## 1. Wiring

Must connect with a socket provided with grounding. Make sure that the voltage complies with that shown on the machine.

## 2. Water filling

This machine equipped with a water boiler that needs water feeding manually. Unload the safety valve (in counterclockwise direction)(drawing 1), filling the water by self-prepared brew basket and cup measure. The maximum capacity of this machine is 5L. You can see the water level through the special indication window. (drawing 8). Cover the safety valve in place after filling out. Make sure that no water poured onto the machine.

## 3. Machine operation

- 1.) Steam tube connection: connect the end of the steam tube with the valve (drawing A), then fasten the clip tab (drawing B).
- 2.) Iron connection: Connect the iron with 4 pin plug with the water boiler, insert it and fix plug. (drawing C)
- 3.) Plug the power
- 4.) Turn on the power of the water boiler (drawing 4), heating pilot light ( drawing 7), it will take about 10~12 minutes to heat the water boiler. It shows the water boiler have already reached working steam pressure when the heating pilot off. You can see the pressure by the pressure gauge. The maximum pressure of this machine is 0.38Mpa.
- 5.) Within 2~3 minutes before starting to iron, turn on the power of the iron (drawing 6), adjust the temperature knob (drawing 10) to the mark which cloth material ready to iron, press the rocker switch (drawing 9), start to steam iron.
- 6.) Steam volume can be adjusted with the electromagnetic valve on the water boiler (drawing 3).
- 7.) The water in the boiler needs to be checked through the special water window if no steam generated in the iron during the machine operation. Wait for 10-15 minutes till the boiler cooled down completely after unplugging the power and close the boiler if no water, then push the safety valve (drawing1), in counterclockwise direction, add the water slowly, re-iron accordingly after heating.
- 8.) Must turn off the switch of the boiler (drawing 4) , iron power switch(drawing 6), as well as head power switch after machine working. Safety valve needs to be loosened (drawing 1) to avoid pressure existed in the machine.

## 4. Maintenance guide

Cut off the power and consult with a maintenance worker if machine abnormal work.

## 5. Common malfunction & solution

- 1.) No steam come out, however, pressure existed in the boiler

# GOLD EAGLE

INSTRUCTIONS FOR USE AND INSTALLATION

MODEL

DL-5



- A. Check if the iron switch power turn on (drawing 6).
  - B. Check if the steam valve close or not (drawing 3)
  - C. Check if the power cord of the iron break or not (drawing 11).
  - D. Check if the coil of the steam valve burn out or not (drawing 2).
  - E. Check if the button & switch of iron break or not (drawing 9).
- 2.) No steam generated from the boiler after boiler power energized
- A. Check if water exist in the boiler or not(drawing 8)
  - B. Check if the boiler heating element break or not(drawing 12)
  - C. Check if the safety valve break or not (drawing 1), this is the critical part and needs to be placed or changed if problems occur.

#### 6. Warning:

<b>!</b>	<ul style="list-style-type: none"> <li>● Safety valve opening is forbidden during normal use (drawing 1)</li> <li>● Unplug the unit and release the steam till the boiler cooling down before filling the water.</li> <li>● This machine is not intended for other purposes.</li> <li>● Don't make any flammable material close to the machine during use.</li> <li>● Don't cover with cloth when the boiler energized.</li> <li>● Can use by the authorized adults only.</li> <li>● Clean action during the machine operation is forbidden.</li> <li>● To avoid any accidents, make sure provided a ground wire.</li> </ul>
----------	--

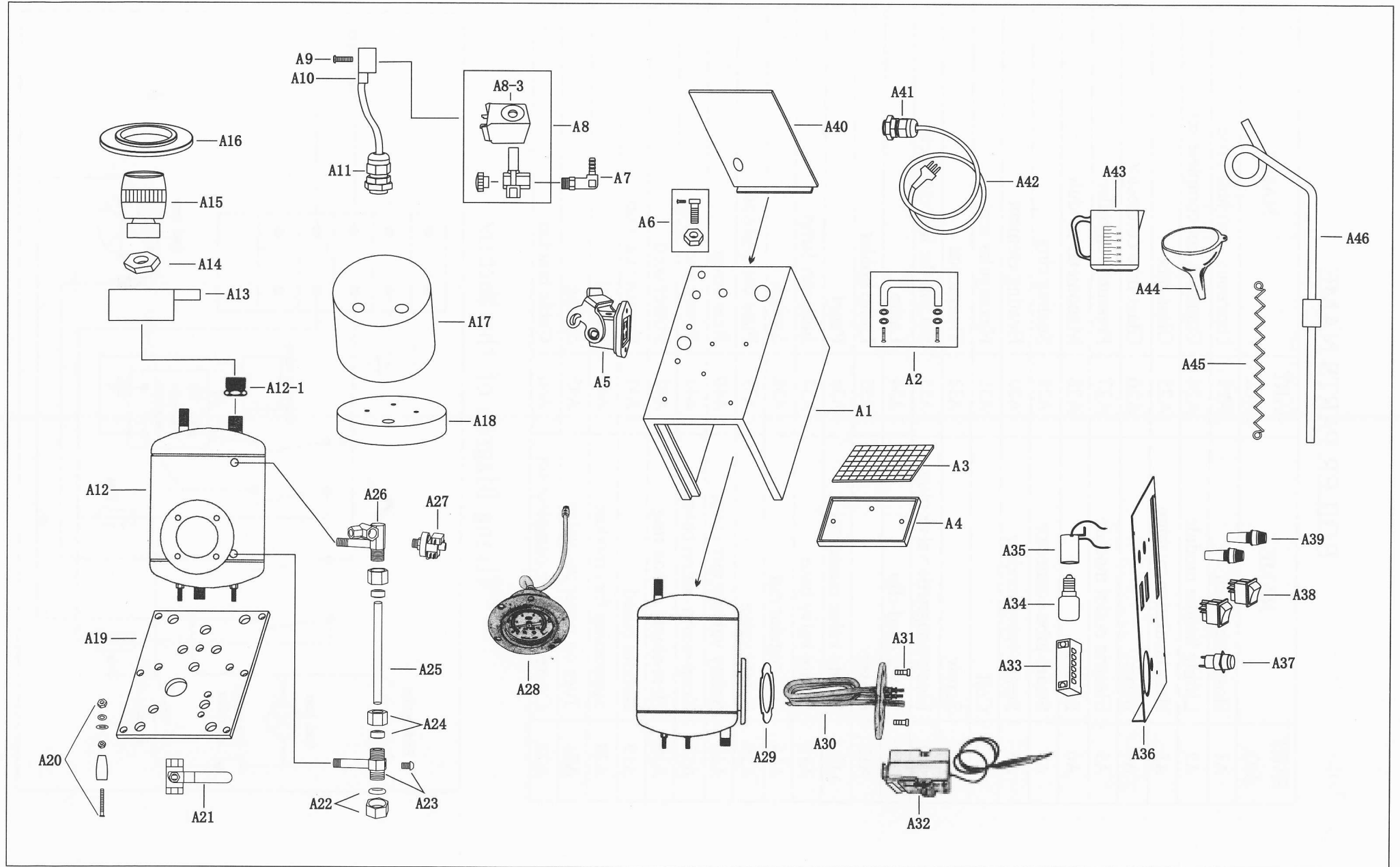
#### 7. Scale guide for the temperature dial

- 1、 Nylon 85°C
- 2、 Silk fabric 116°C
- 3、 Woolen fabric 147°C
- 4、 Cotton fabric 178°C
- 5、 Linen fabric 210°C

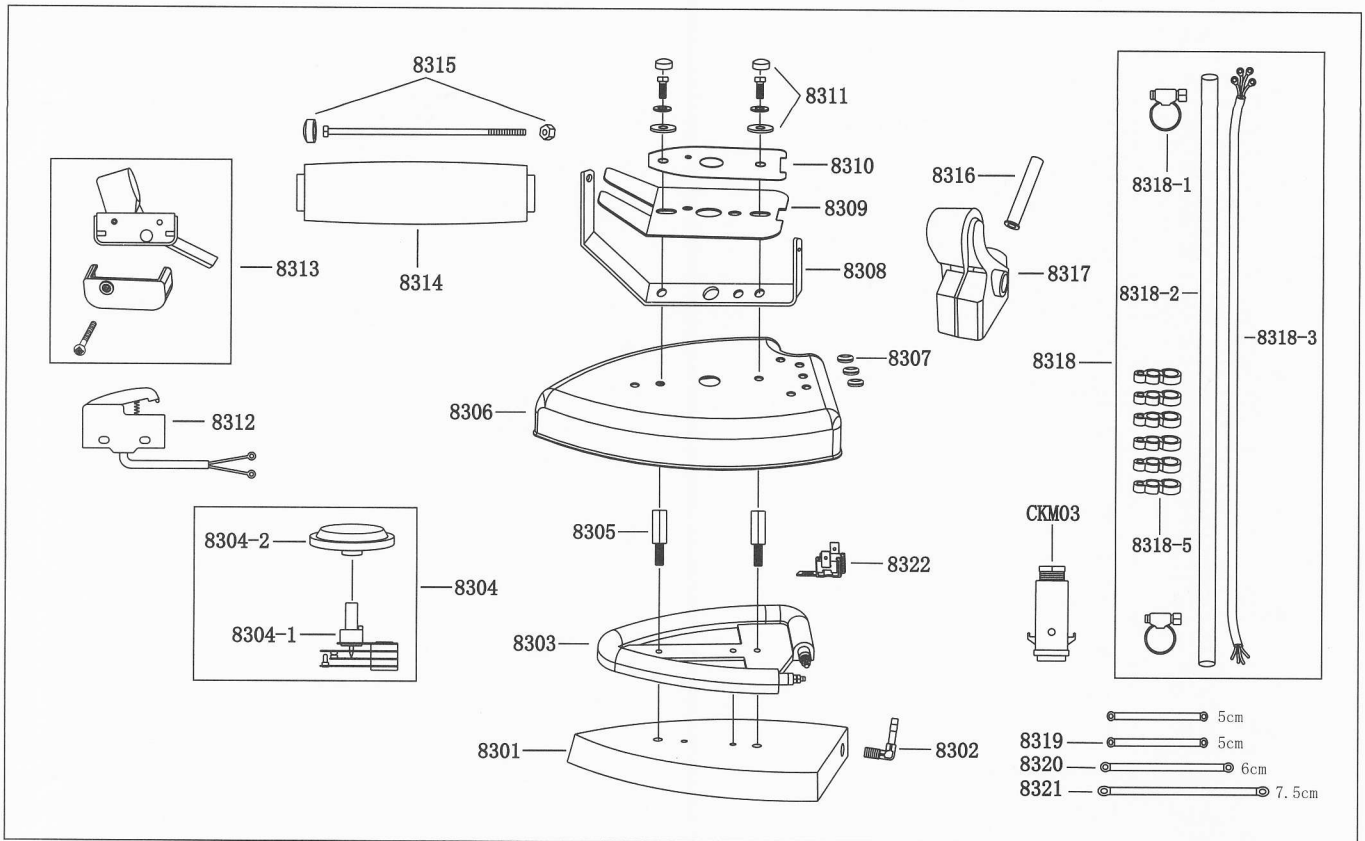
#### 8. Parameter guide

Voltage	( ) 220V~ ( ) 110V~
Boiler heater	1500W
Iron heater	900W
Steam pressure	4.0Mpa
Boiler capacity	5L
Autonomy	7-8 HOURS
Weight	13 KG
Packing dimension	54*29.5*45CM

# Boiler Exploded View



# DISASSEMBLED VIEW OF 83TN IRON



PART NO.	NAME	PART NO.	NAME	PART NO.	NAME
8301	Soleplate of iron	8309	Thermal baffle	8318-1	Fixation turn for steam tube
8302	Curved adapter	8310	Aluminum card	8318-2	Steam tube (2.4M)
8303	Heater of iron	8311	Screw components	8318-3	Power cable (2.4M)
8304	Thermostat components	8312	Vapor switch	8318-5	Plastics buttons of "S" shape
8304-1	Thermostat	8313	Fixation seat components for vapor switch	8319	50mm heat wire
8304-2	Thermostat knob	8314	Handle of iron	8320	60mm heat wire
8305	Hex bolt	8315	Handle connecting screw rod	8321	75mm heat wire
8306	Ferrous outer shell	8316	Power cable jacket	8322	Temperature insurance
8307	Rubber Circle	8317	Junction box components	CKM03	Four-core plug
8308	Ferrous support	8318	Power cable, steam tube components		